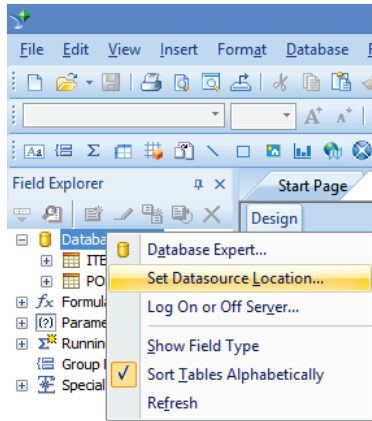


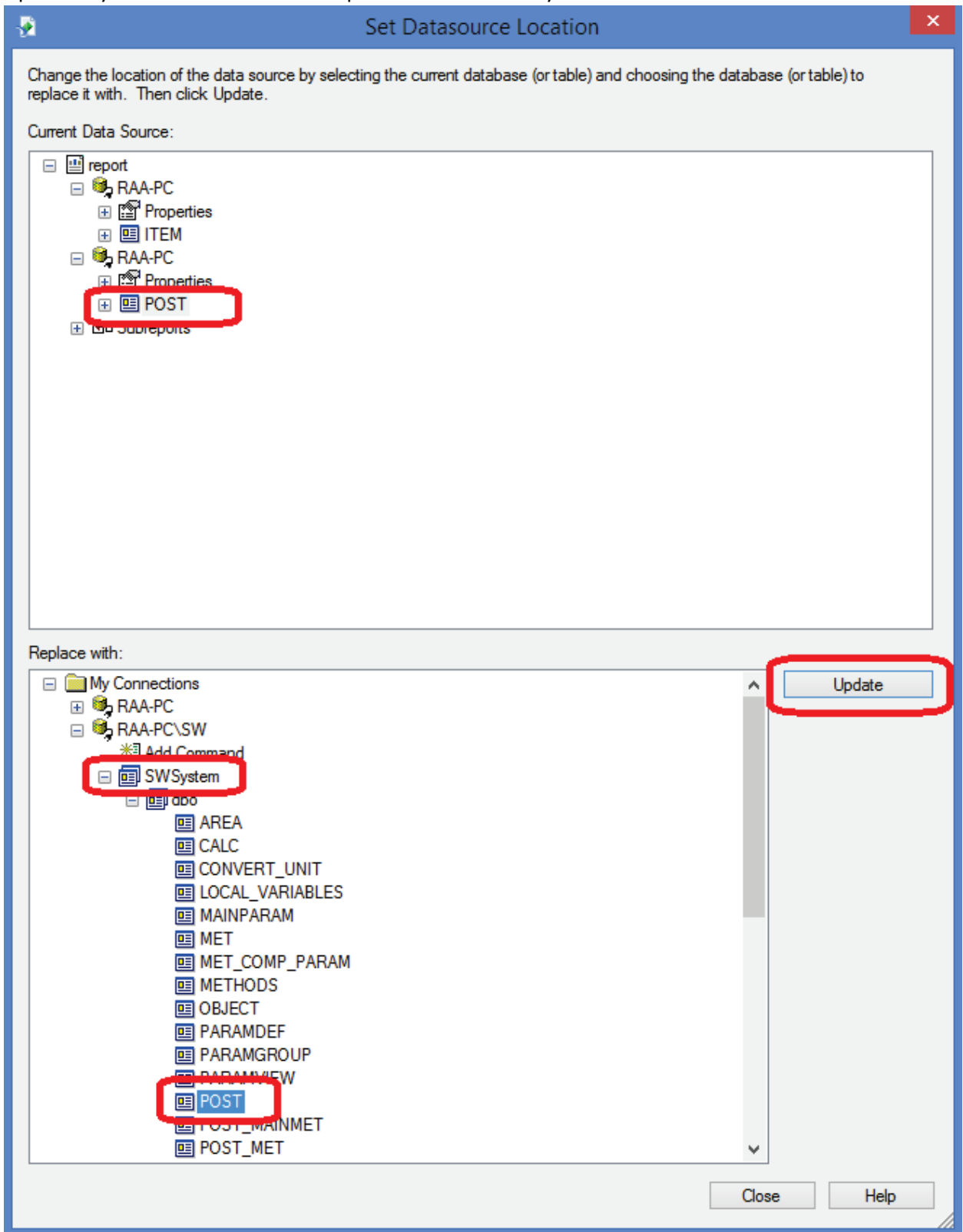
How to update Crystal Report templates to ShipWeight version 12

Changes to Crystal Reports

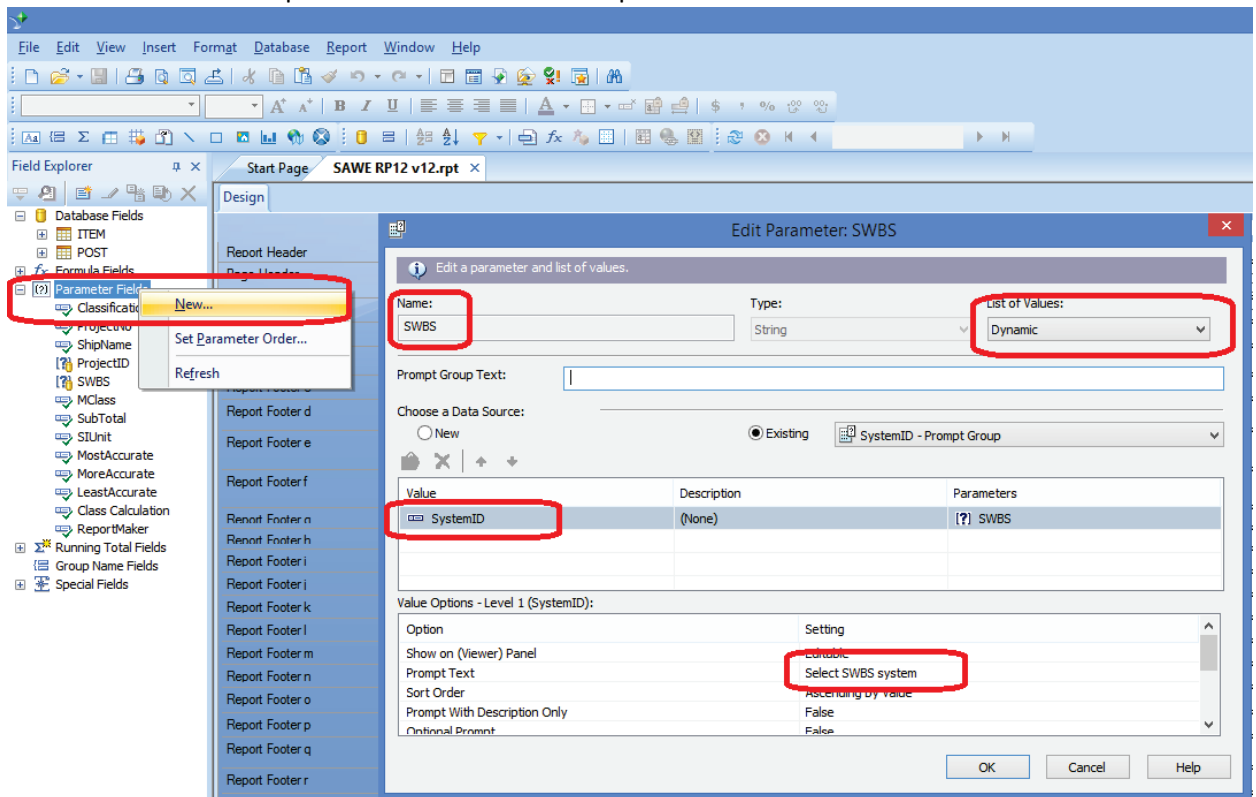
1. Open a Crystal Report template for version 11 and save a renamed copy for update to version 12.
2. Rightclick the database icon in the Field Explorer and select Database Location:



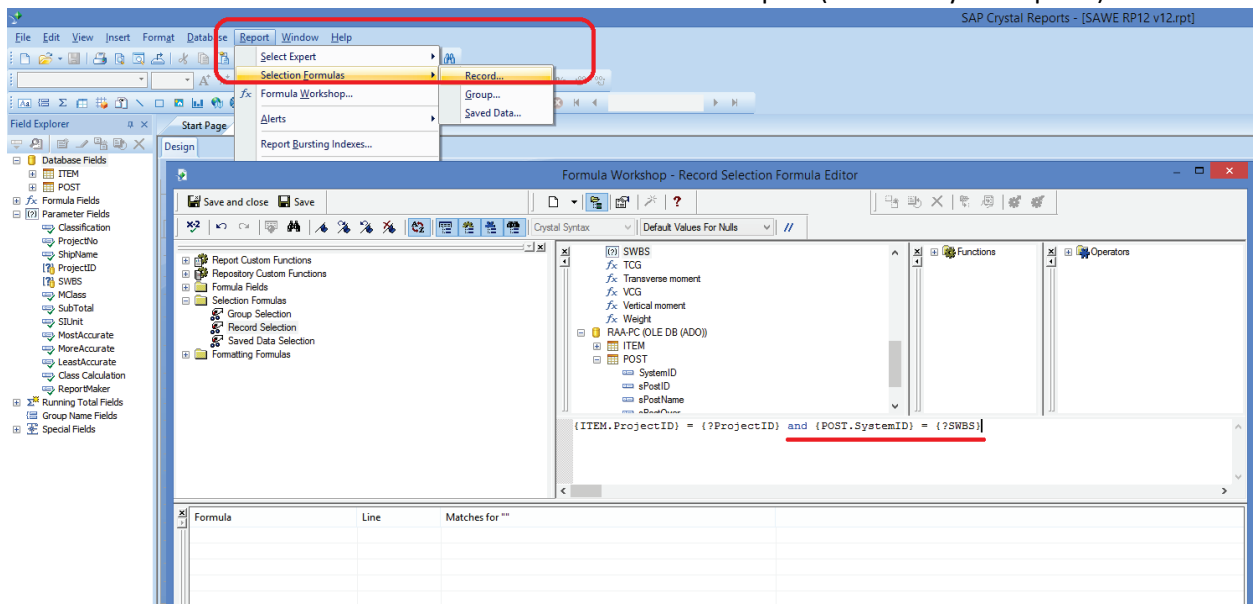
3. Update any POST table references to point to the new SWSystem table:



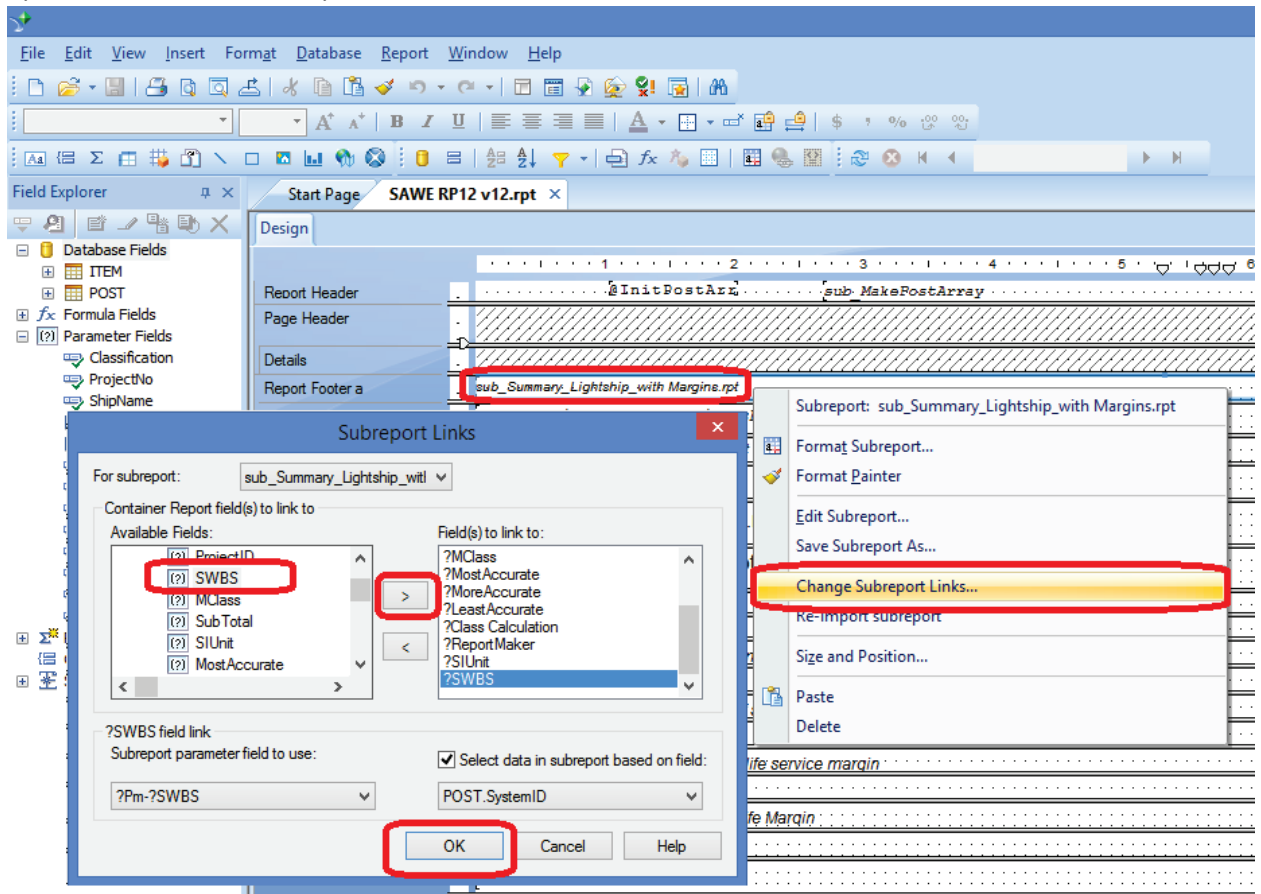
4. Create a new selection parameter “SWBS” in the report



5. Add a selection formula to the record selection in a the main report (unless only subreports):



6. Update selection link to subreport, by rightclicking the subreport(s) and do update links. In update links, add the new parameter:



7. Save the report and run it in ShipWeight V12 – select the new SWBS you've created in the report filter window!