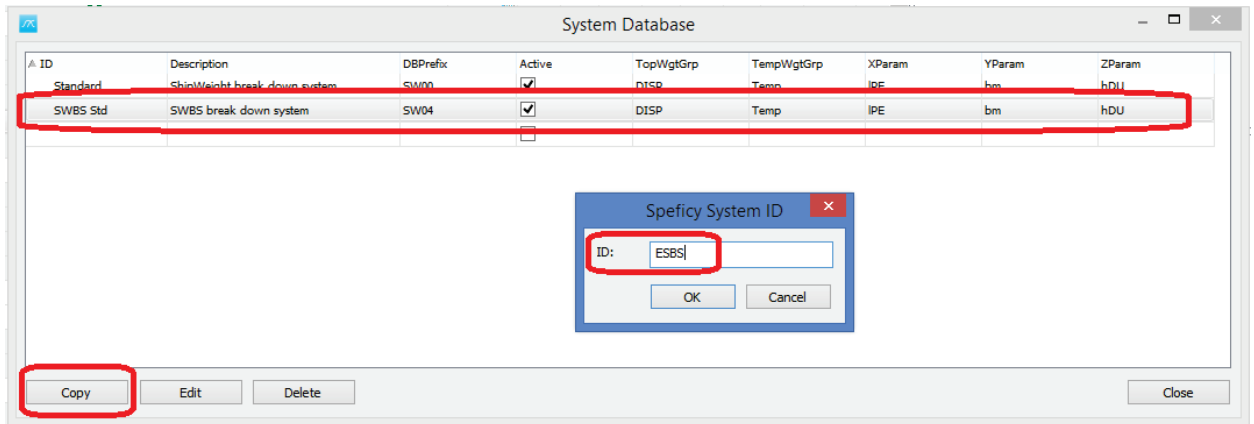


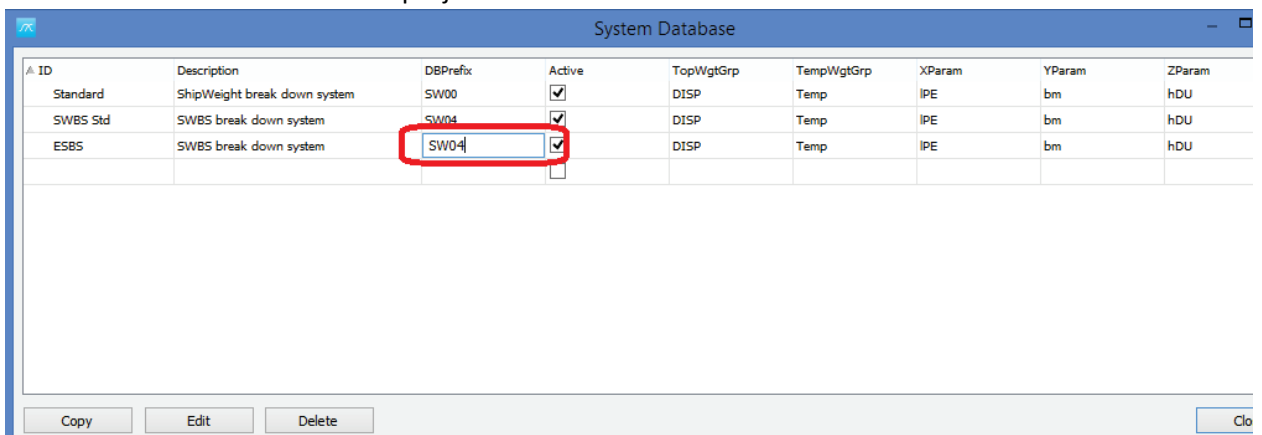
## How to create new WBS in ShipWeight version 12

### Changes to ShipWeight

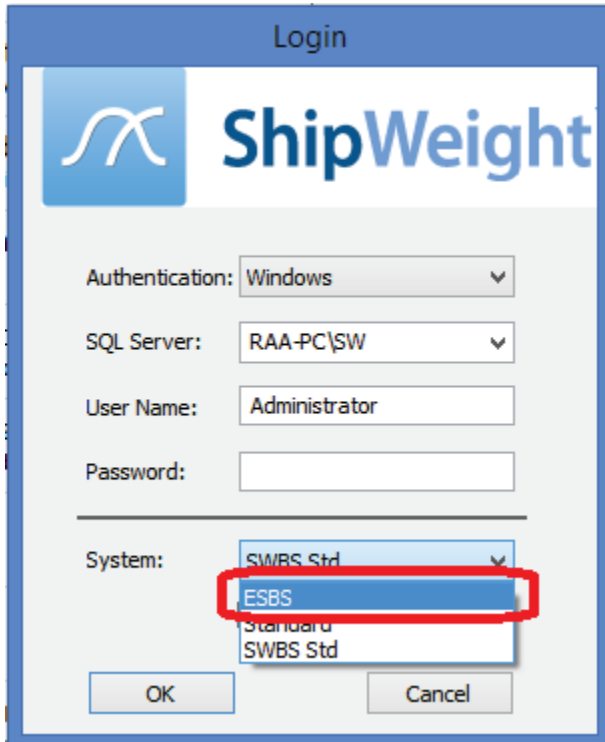
1. Make sure you have the latest version of ShipWeight version 12
2. Open ShipWeight
3. Go to menu: Database->Create->System Database...
4. Select and mark one of the existing WBS' listed (the one closest to the new one) and click the "Copy" button.



5. Give in the new ID for the new WBS you want to create.
6. Settings can be given for the new WBS. Usually, the only one to pay attention to is DBPrefix column. The gridcell can be clicked to edit. Here you set the project database prefix. If set to SW04, projects created with this WBS can be opened in the standard SWBS and standard SWBS projects can be opened in this new WBS. If set to something else, i.e. SW05, these projects will be isolated from the other SWBS projects and vice versa.



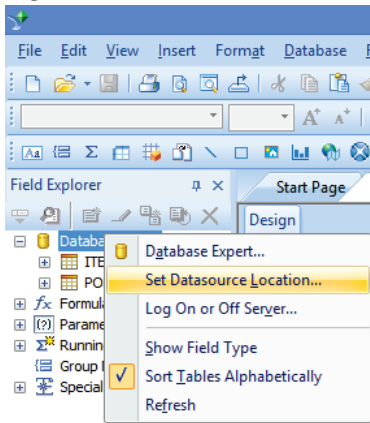
- Restart ShipWeight and login while selecting the new system.



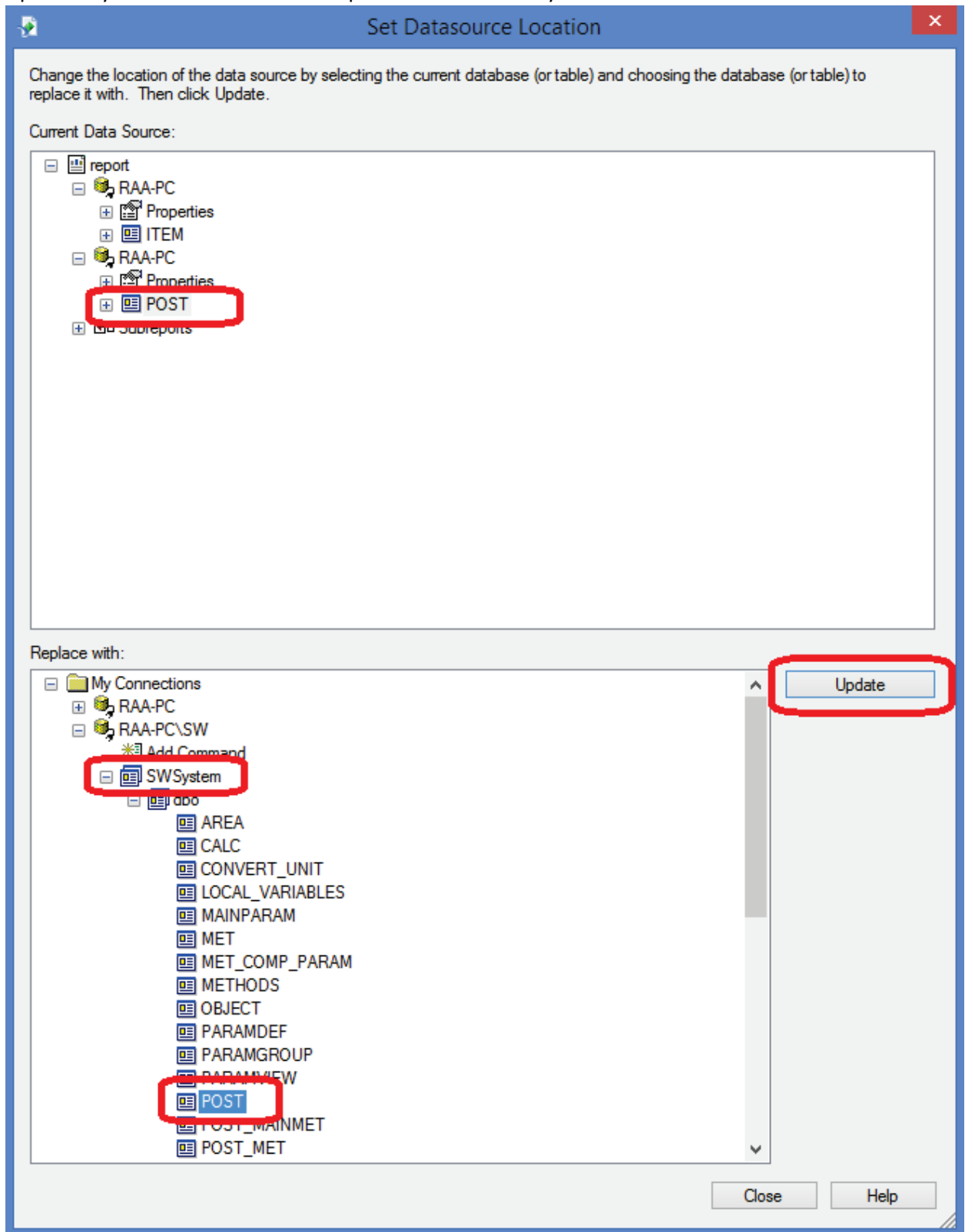
- Edit the new system same way and place as with normal SWBS, that is go to Database->Administrator->Wgt. Grp. Definition... These changes will only be for the new system.
- Restart ShipWeight again after modifications has been done.

## Changes to Crystal Reports

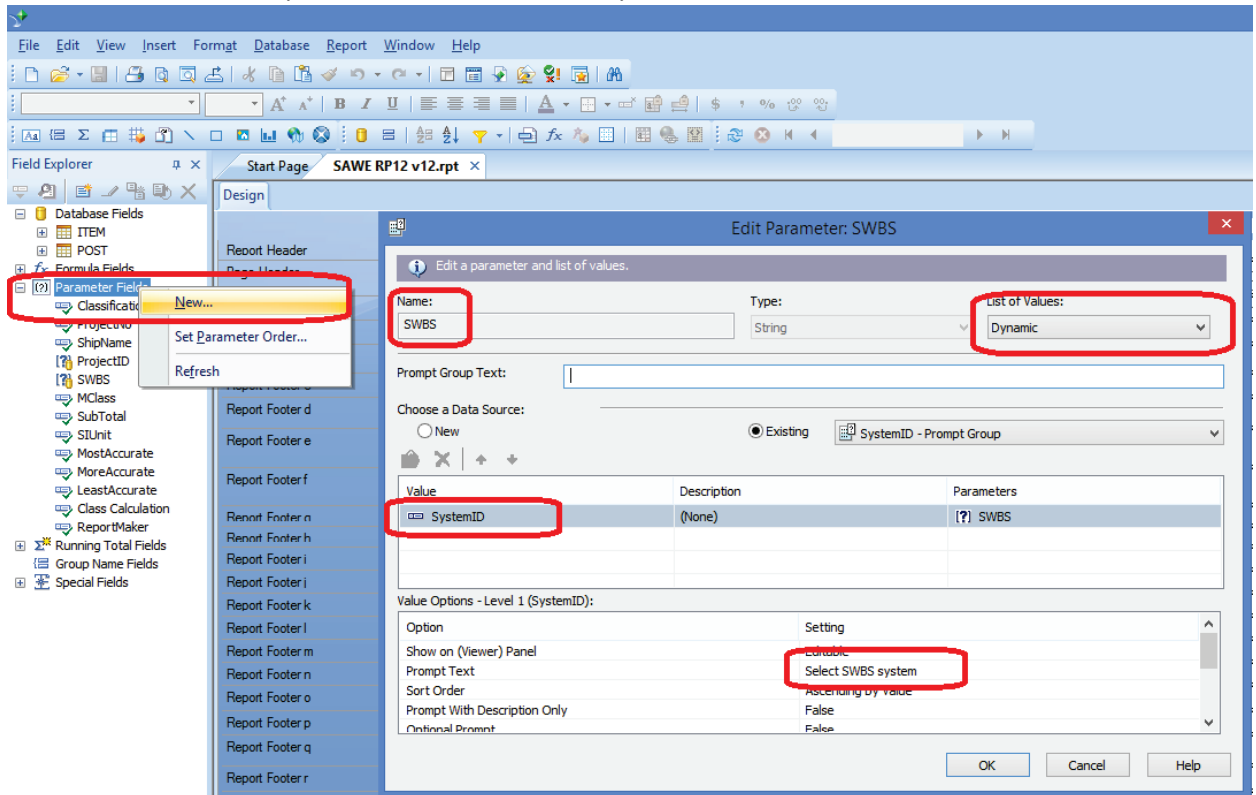
- Open a Crystal Report template for version 11 and save as version 12.
- Rightclick the database icon in the Field Explorer and select Database Location:



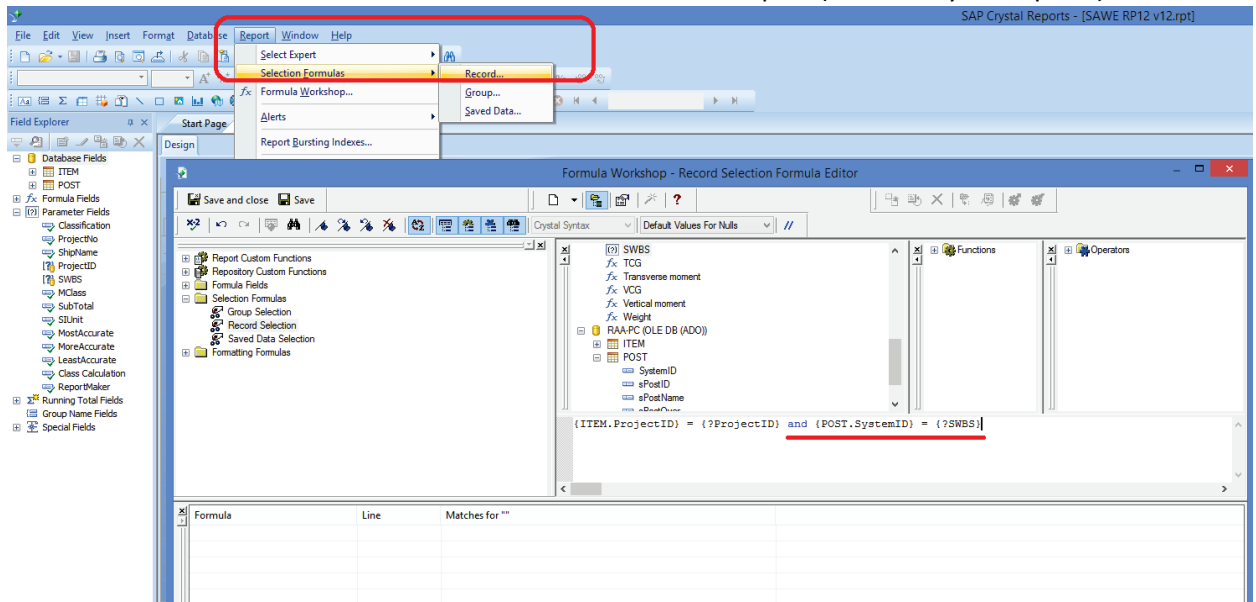
- Update any POST table references to point to the new SWSystem table:



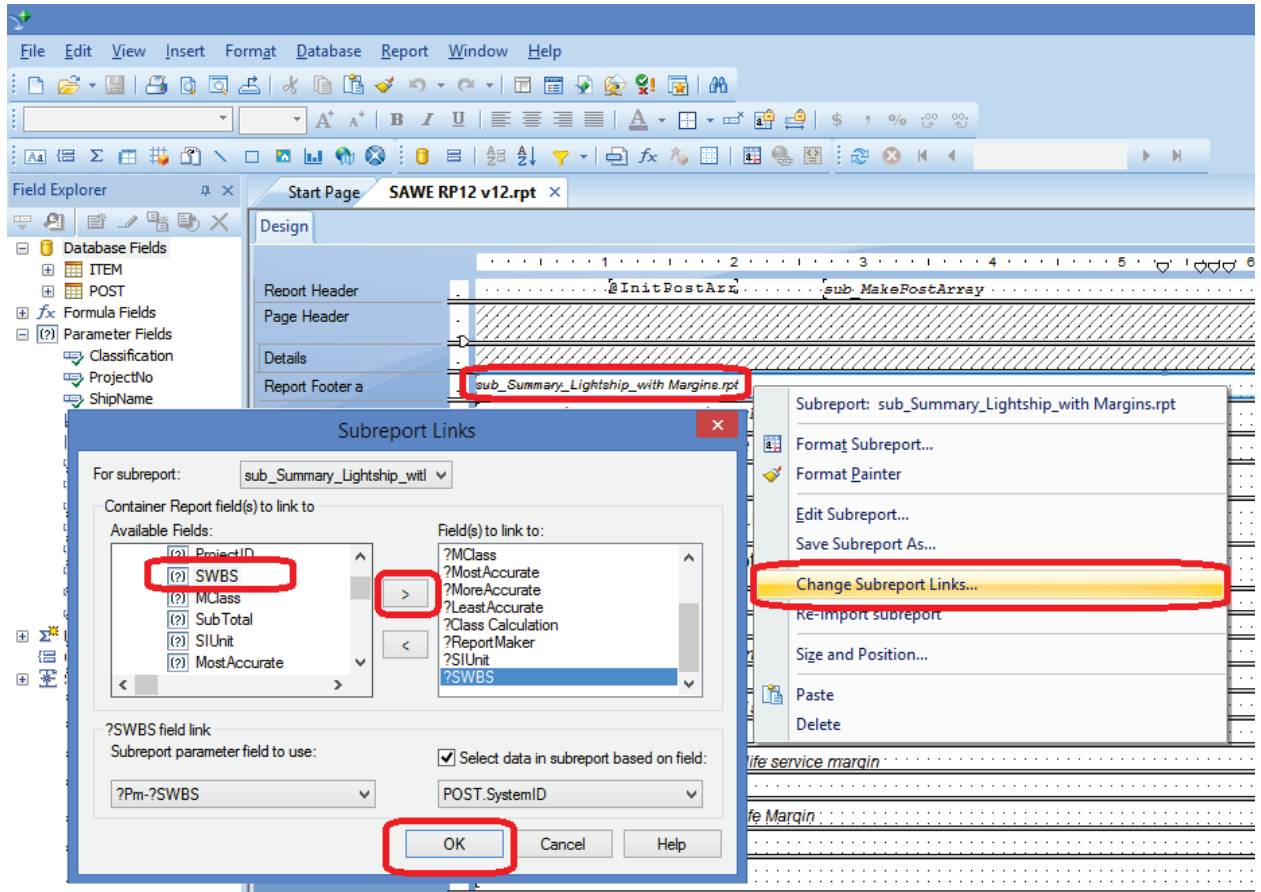
4. Create a new selection parameter “SWBS” in the report



5. Add a selection formula to the record selection in a the main report (unless only subreports):



- Update selection link to subreport, by rightclicking the subreport(s) and do update links. In update links, add the new parameter:



- Save the report and run it in ShipWeight V12 – select the new SWBS you’ve created in the report filter window!