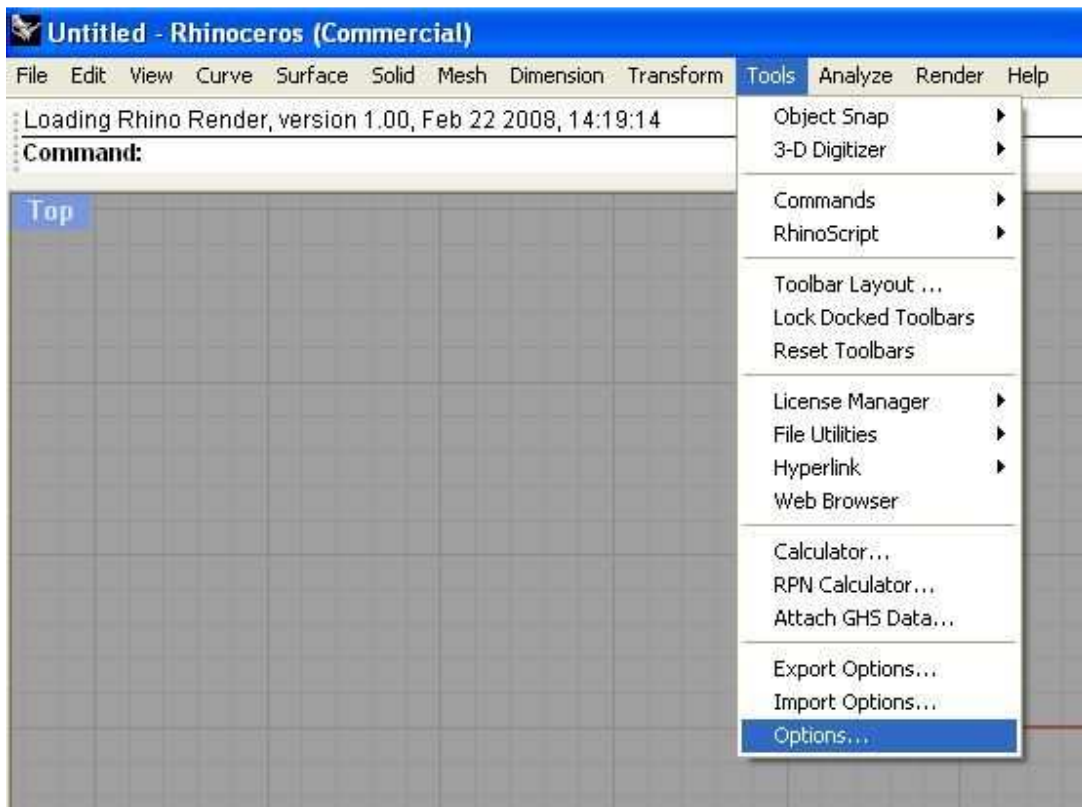


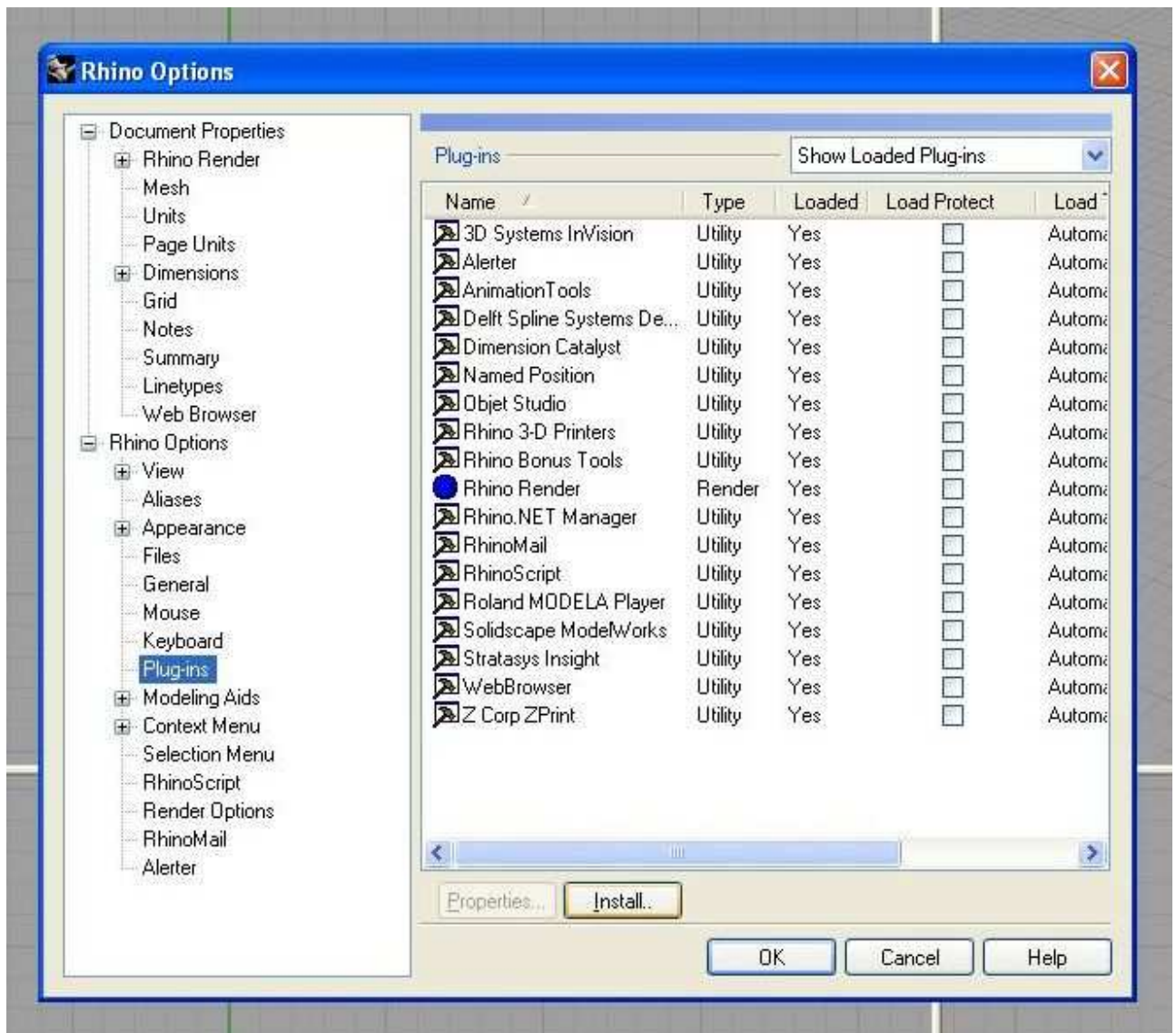
Manual installation of ShipWeight plug-in

1: Tools -> Options



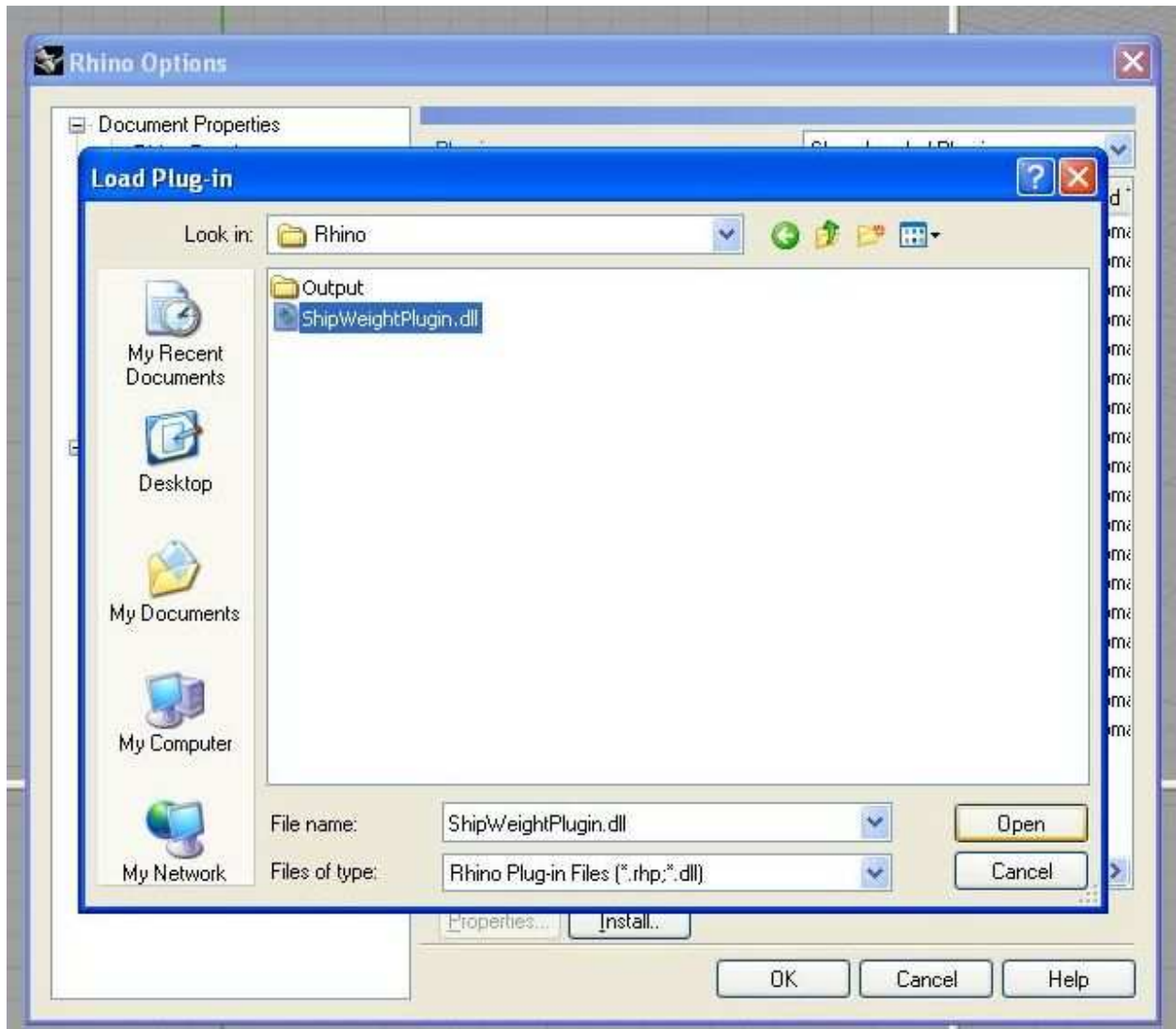
Start Rhinoceros 3D. Open the 'Tools' menu. Click on 'Options'.

2: Plug-ins -> Install



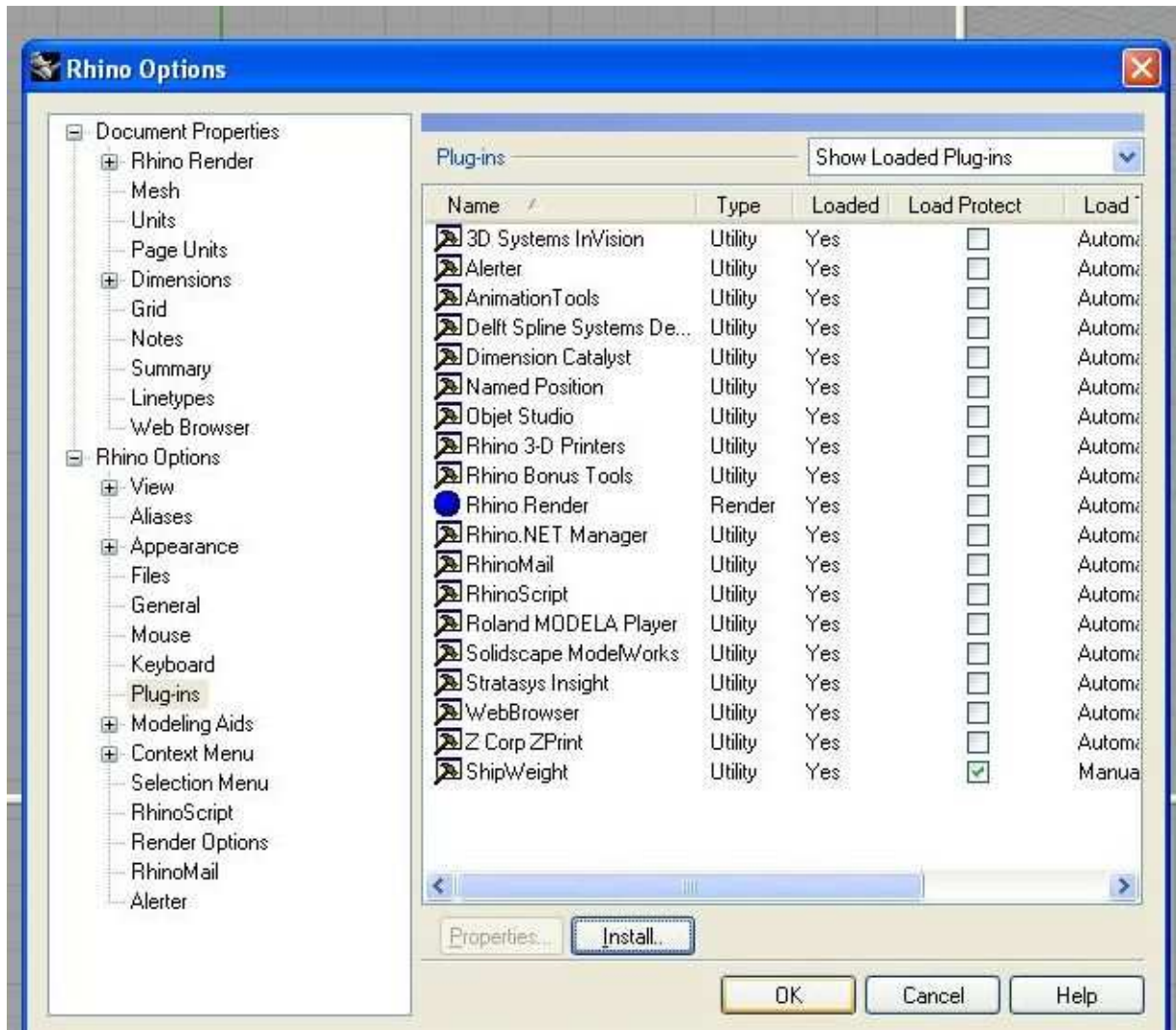
Choose the 'Plug-ins' option from the tree view. Click on 'Install' button.

3: Browse to ShipWeightPlugin.dll -> Open



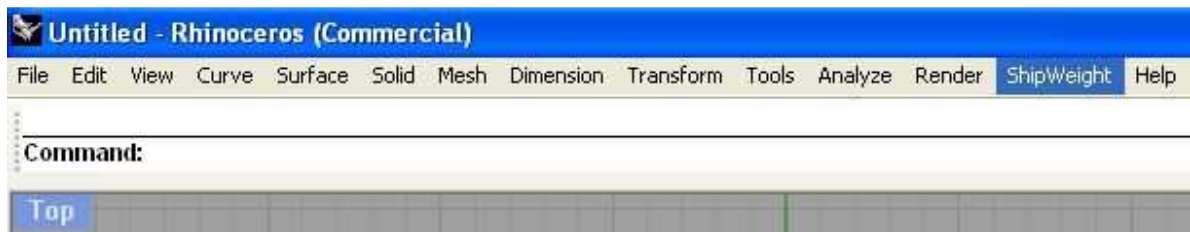
Browse to where the Plug-in ('ShipWeightPlugin') is located. Click on file. Click on 'Open' button.

4: Ok to confirm



Click on 'OK' button to confirm installation of plug-in.

5: Done



When plug-in is installed a new menu item named 'ShipWeight' is made available.