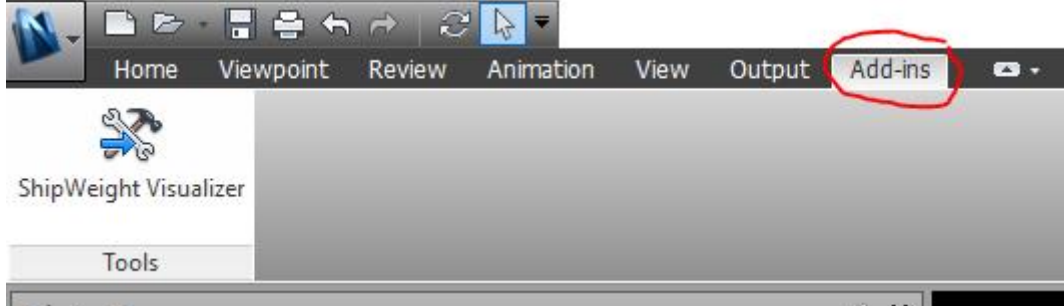


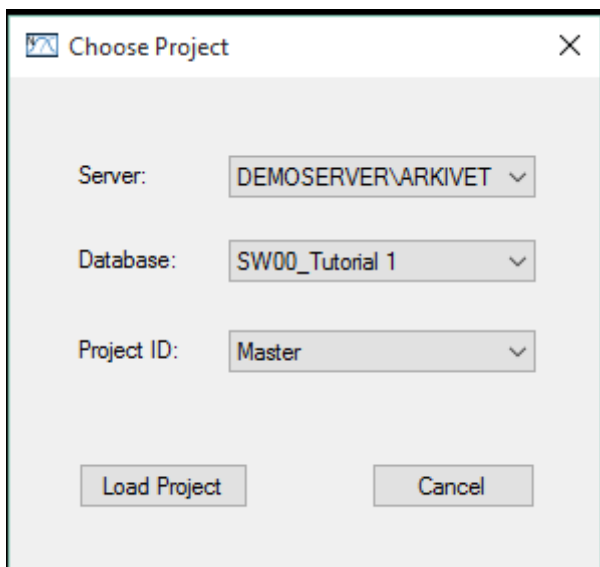
ShipWeight plugin for Navisworks (Version 1.0)

With the ShipWeight Navisworks plugin you can do visual sanity checks during estimation and monitoring.

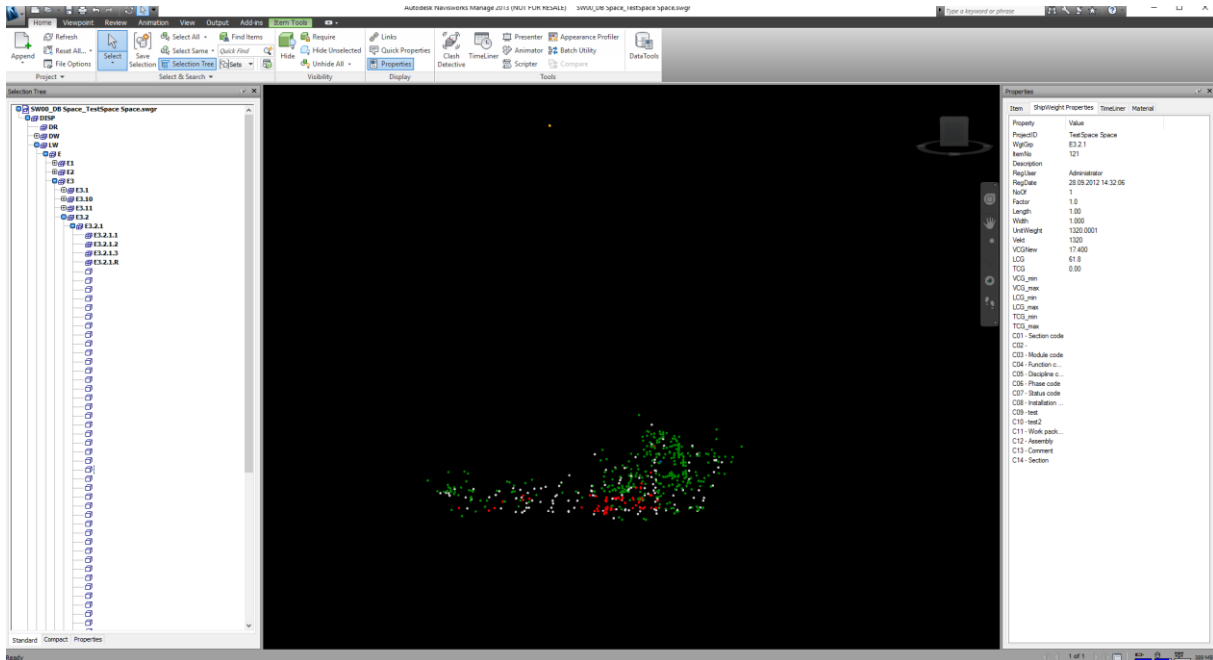
After installation the plugin can be found by clicking the 'Add-ins' tab.



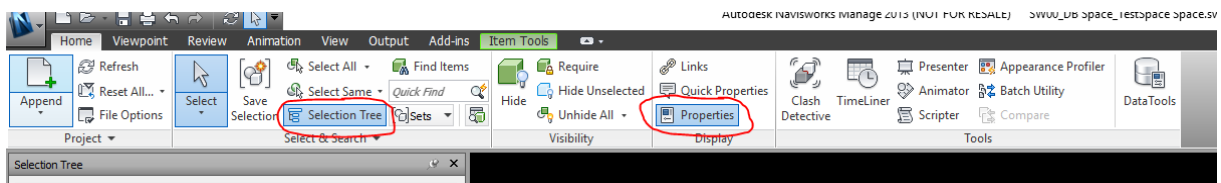
The plugin displays center of gravity and extension in 3D for all parts of a project contained in a ShipWeight database:



You can select a particular item by clicking on it or by selecting it from a tree-view. The item is then highlighted and information about it is displayed in Navisworks' 'Properties' window.



Click the marked 'Selection Tree' and 'Properties' items to toggle these windows on and off.



All available data for a item from the ShipWeight database is displayed in the 'Properties' window.

Properties			
Item	ShipWeight Properties	TimeLiner	Material
Property	Value		
ProjectID	TestSpace Space		
WgtGrp	E3.7.1		
ItemNo	337		
Description			
RegUser	Administrator		
RegDate	28.09.2012 14:32:06		
NoOf	1		
Factor	1.0		
Length	1.00		
Width	1.000		
UnitWeight	700.0000		
Vekt	700		
VCGNew	13.100		
LCG	67.4		
TCG	0.00		
VCG_min			
VCG_max			
LCG_min			
LCG_max			
TCG_min			
TCG_max			
C01 - Section code			
C02 -			
C03 - Module code			
C04 - Function c...			
C05 - Discipline c...			
C06 - Phase code			
C07 - Status code			
C08 - Installation ...			
C09 - test			
C10 - test2			
C11 - Work pack...			
C12 - Assembly			
C13 - Comment			
C14 - Section			

The custom 'Weight Group Hierarchy' window is similar to Navisworks 'Selection Tree' but has the additional benefit of displaying weight groups and items in colors selected by the user.

